

FOUNTAINS AT DELRAY BEACH

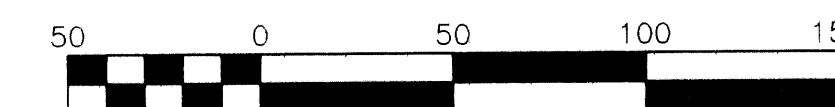
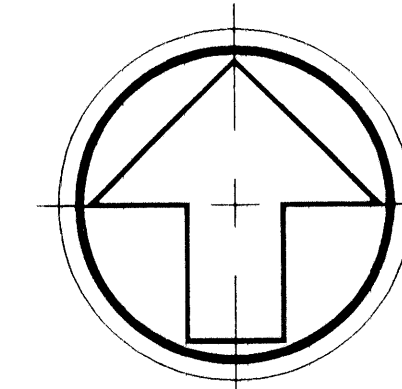
A PORTION OF THE SOUTHEAST ONE-QUARTER OF SECTION 14, TOWNSHIP 46 SOUTH, RANGE 42 EAST CITY OF DELRAY BEACH, PALM BEACH COUNTY, FLORIDA

THIS INSTRUMENT PREPARED BY:
MICHAEL D. ROSE, PSM

SDA SHAH DROTOS & ASSOCIATES ENGINEERING SURVEYING PLANNING

1885 W. Commercial Blvd. • Suite 190 • Ft. Lauderdale Fl. 33309
PH: 954-776-7604 • FAX: 954-776-7608

MAY 1997



Scale 1" = 50'

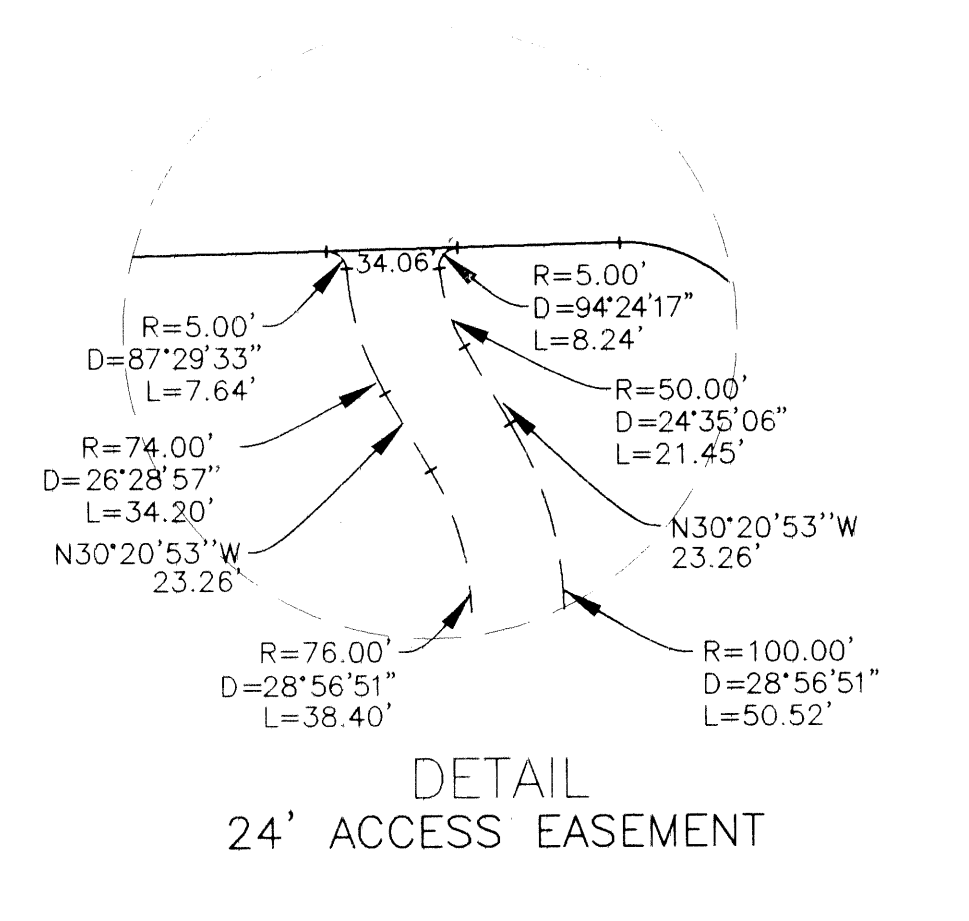
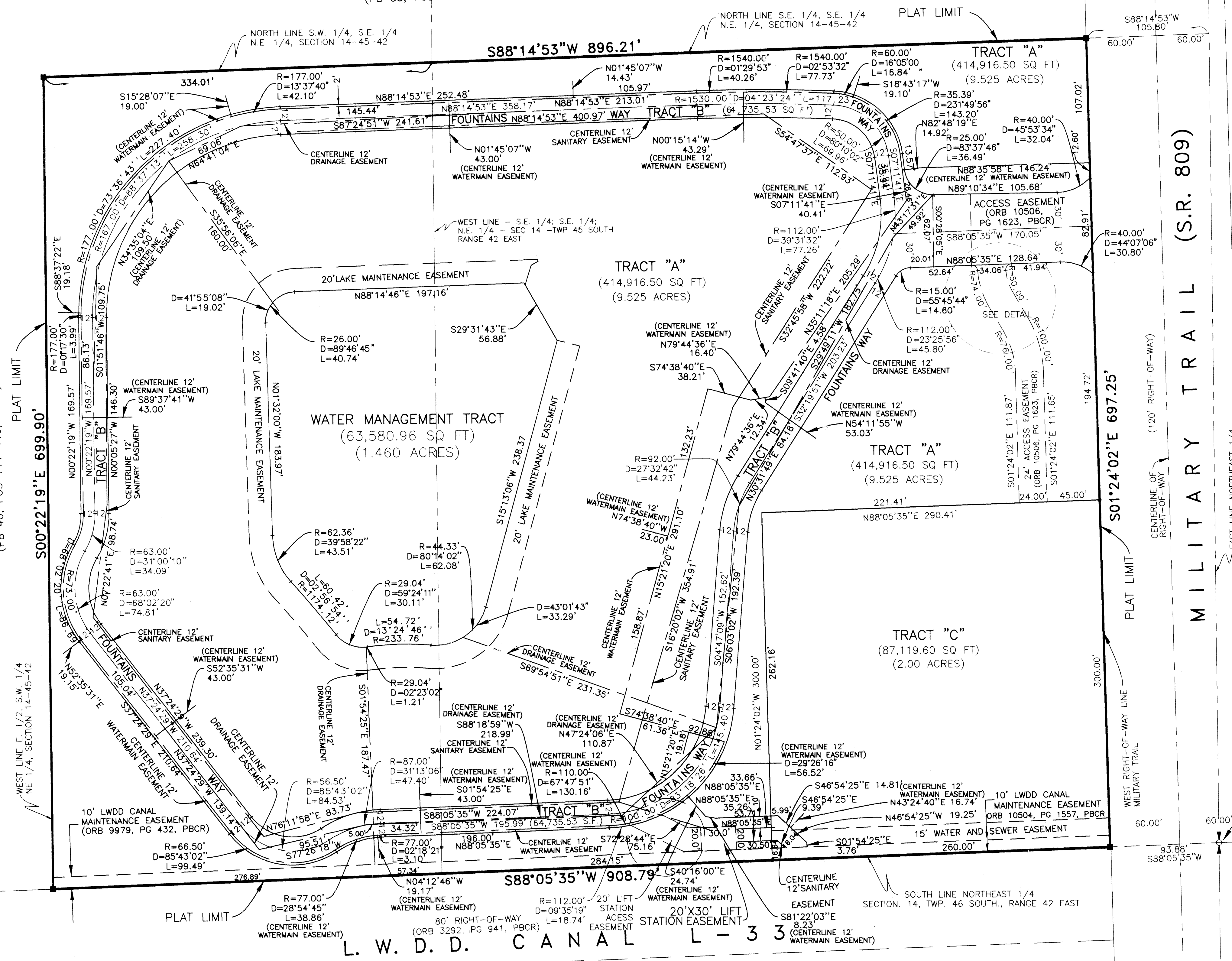
STATE OF FLORIDA SS
COUNTY OF PALM BEACH

This Plat was filed for record at _____ M., this _____ day of _____, 199_, and duly recorded in Plat Book No. _____ on Pages _____ and _____.

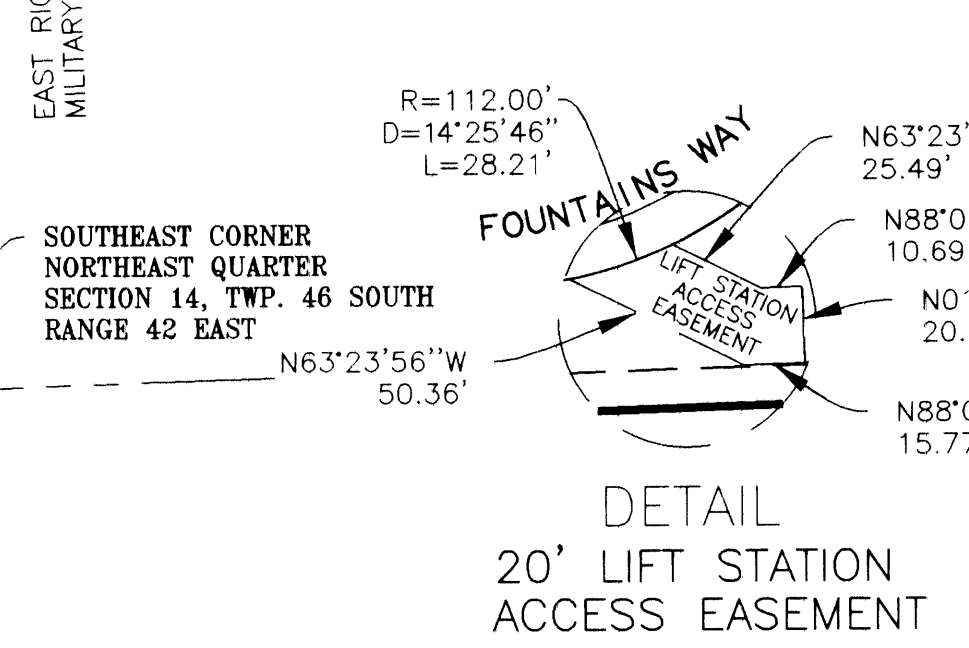
DOROTHY H. WILKEN, CLERK

BY: _____ DC

HIGH POINT OF DELRAY WEST PLAT NO. 1
(PB 38, PGS 128-129, PBCR)



- SURVEY NOTES:**
- BEARINGS SHOWN HEREON ARE ASSUMED AND ARE RELATIVE TO THE WEST RIGHT-OF-WAY LINE OF MILITARY TRAIL. SAID LINE BEARS SOUTH 01°24'02" WEST 24, PAGES 232 AND 233, P.B.C.R.).
 - THERE MAY BE ADDITIONAL RESTRICTIONS THAT ARE NOT RECORDED ON THIS PLAT THAT MAY BE FOUND IN THE PUBLIC RECORDS OF THIS COUNTY.
 - THERE SHALL BE NO BUILDINGS OR ANY KIND OF CONSTRUCTION PLACED ON UTILITY OR DRAINAGE EASEMENTS. CONSTRUCTION OR LANDSCAPING UPON MAINTENANCE OR MAINTENANCE ACCESS EASEMENTS MUST BE IN CONFORMANCE WITH ALL BUILDING AND ZONING CODES AND/OR ORDINANCES OF THE CITY OF DELRAY BEACH.
 - THERE SHALL BE NO TREES OR SHRUBS PLACED ON UTILITY EASEMENTS WHICH ARE PROVIDED FOR WATER AND SEWER USE OR UPON DRAINAGE EASEMENTS. LANDSCAPING ON OTHER UTILITY EASEMENTS SHALL BE ALLOWED ONLY AFTER CONSENT OF ALL THE UTILITY COMPANIES OCCUPYING SAME.
 - IN INSTANCES WHERE DRAINAGE AND UTILITY EASEMENTS INTERSECT, THOSE AREAS OF INTERSECTION ARE DRAINAGE AND UTILITY EASEMENTS. CONSTRUCTION, OPERATION AND MAINTENANCE OF UTILITIES WITHIN THESE AREAS OF INTERSECTION SHALL NOT INTERFERE WITH THE CONSTRUCTION, OPERATION AND MAINTENANCE OF DRAINAGE FACILITIES.
 - D.E. - INDICATES DRAINAGE EASEMENT
 - PRM - INDICATES PERMANENT REFERENCE MONUMENT (PRM) NO. 3998 UNLESS OTHERWISE NOTED.
 - P.B. - INDICATES PLAT BOOK
 - ORB - INDICATES OFFICIAL RECORDS BOOK
 - POB - INDICATES POINT OF BEGINNING
 - POC - INDICATES POINT OF COMMENCEMENT
 - C - INDICATES CENTERLINE
 - U.E. - INDICATES UTILITY EASEMENT
 - R/W - INDICATES RIGHT-OF-WAY
 - G.U. - INDICATES GENERAL UTILITY EASEMENT
 - N.R. - INDICATES NON-RADIAL
 - THE CITY OF DELRAY BEACH SHALL HAVE THE RIGHT OF ACCESS FOR EMERGENCY AND MAINTENANCE PURPOSES WITHIN THE LIMITS OF THIS SUBDIVISION.



SUBDIVISION: Fountains at Delray Beach
BOOK: 83 PAGE: 38
FLOOD ZONE: ZONING: ZIP CODE: PUD NAME: City of Delray Beach

-AD-960316\0316PLAT Mon Jul 13 07:35:40 1998